

éch : 1/100



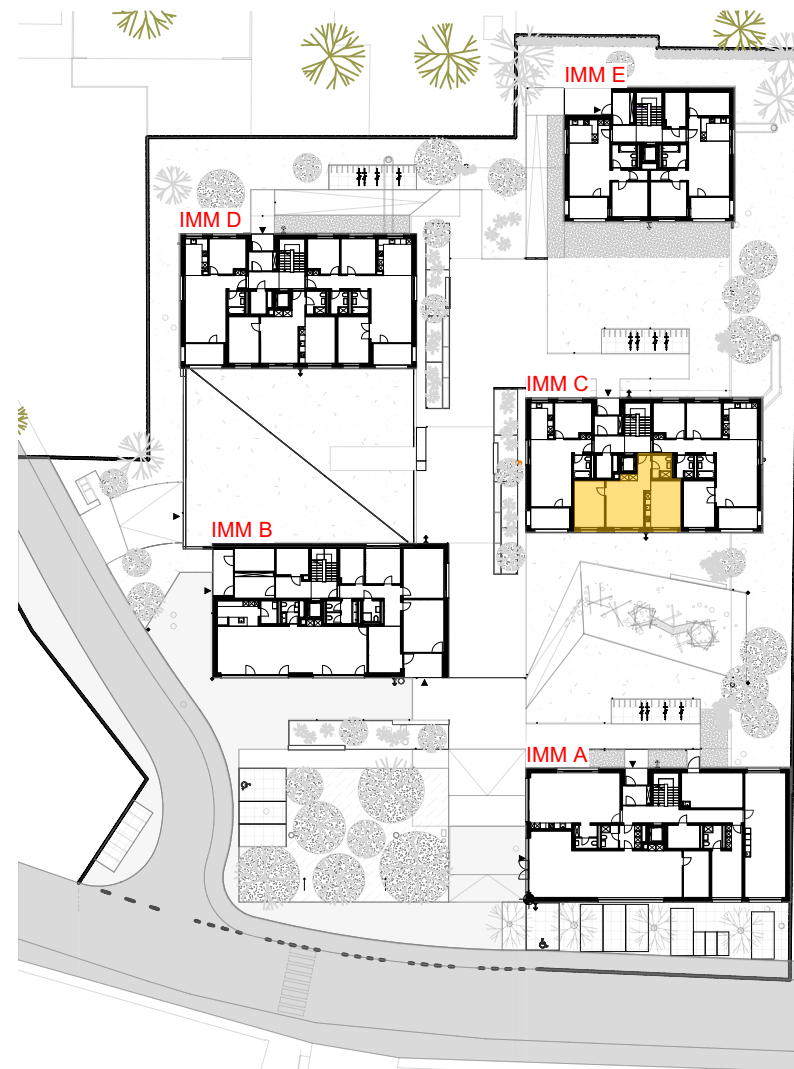
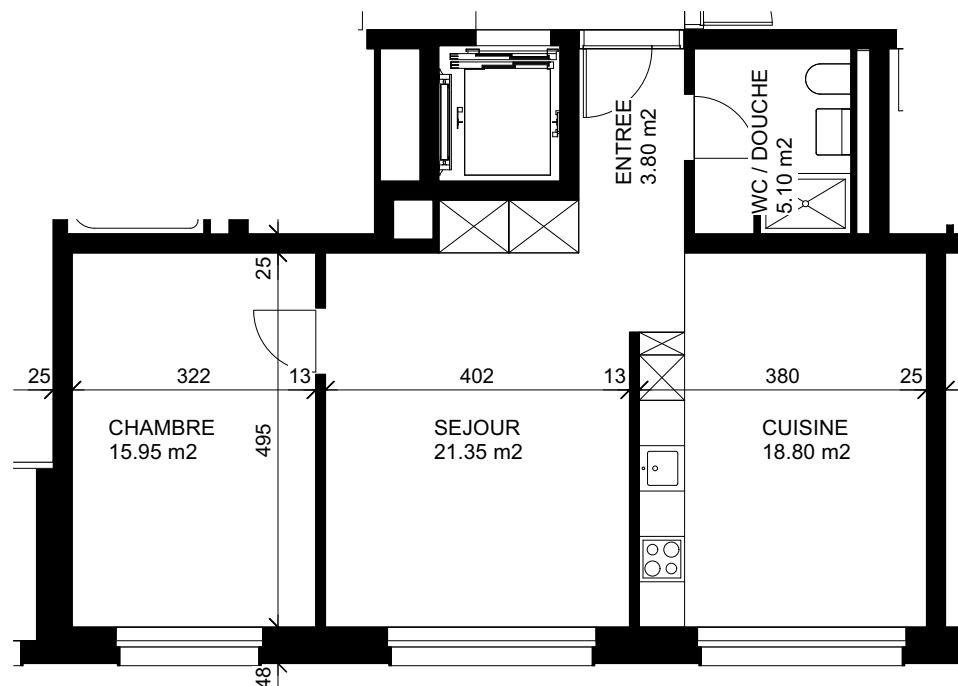
REZ-DE-CHAUSSEE

Surface lot 6.01 : 106.20 m<sup>2</sup>

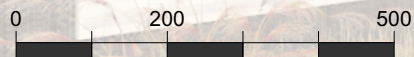
Loyer net : 1'595

Charges : 375

Total loyer brut : 1'970



éch : 1/100



REZ-DE-CHAUSSEE

Surface lot 6.02 : 65.00 m<sup>2</sup>

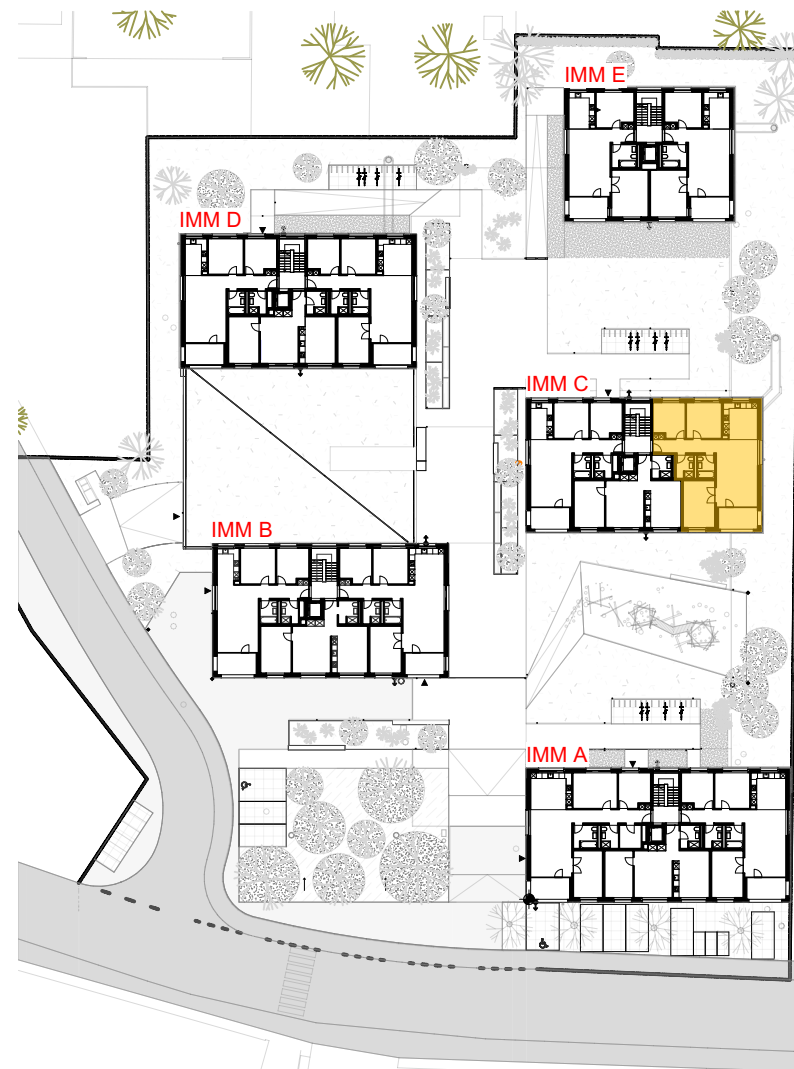
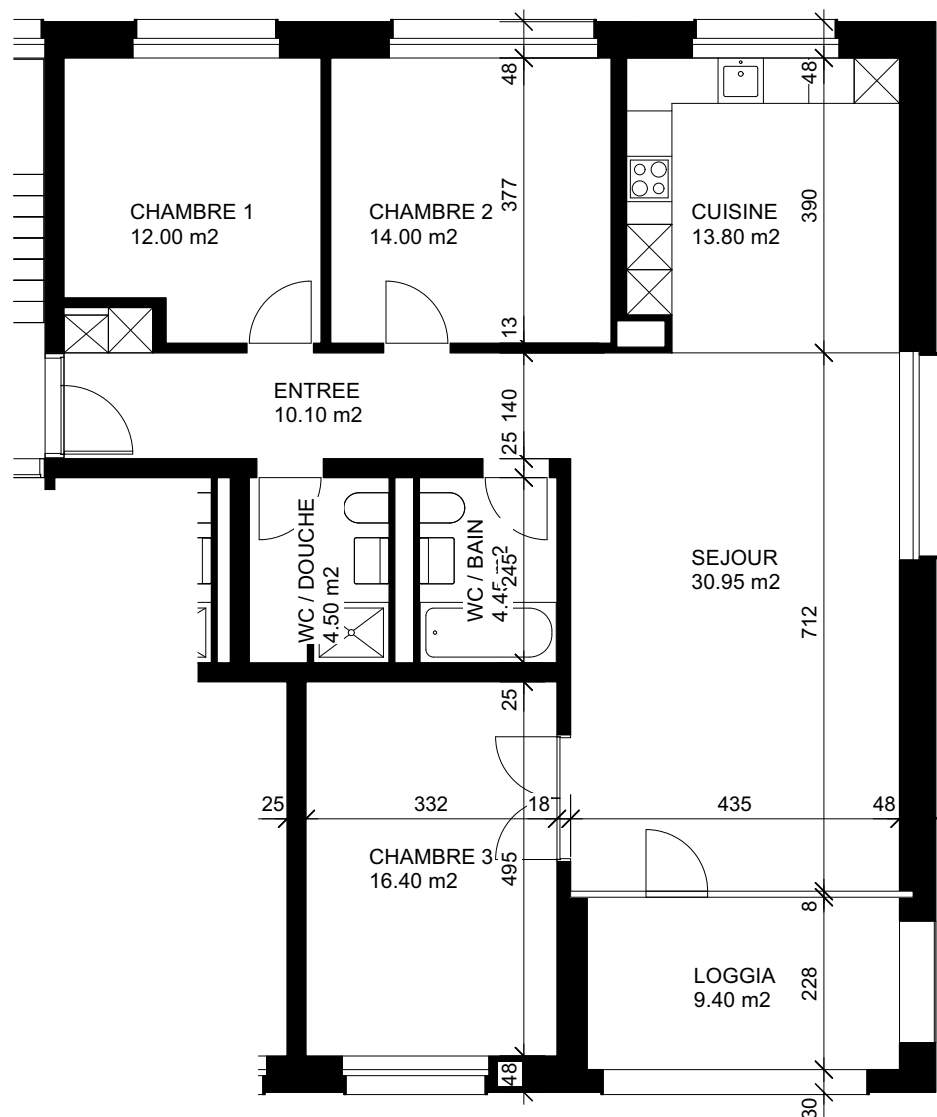
Loyer net : 1'135

Charges : 230

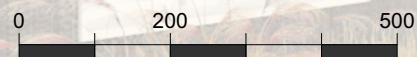
Total loyer brut : 1'365







éch : 1/100



1ER ETAGE

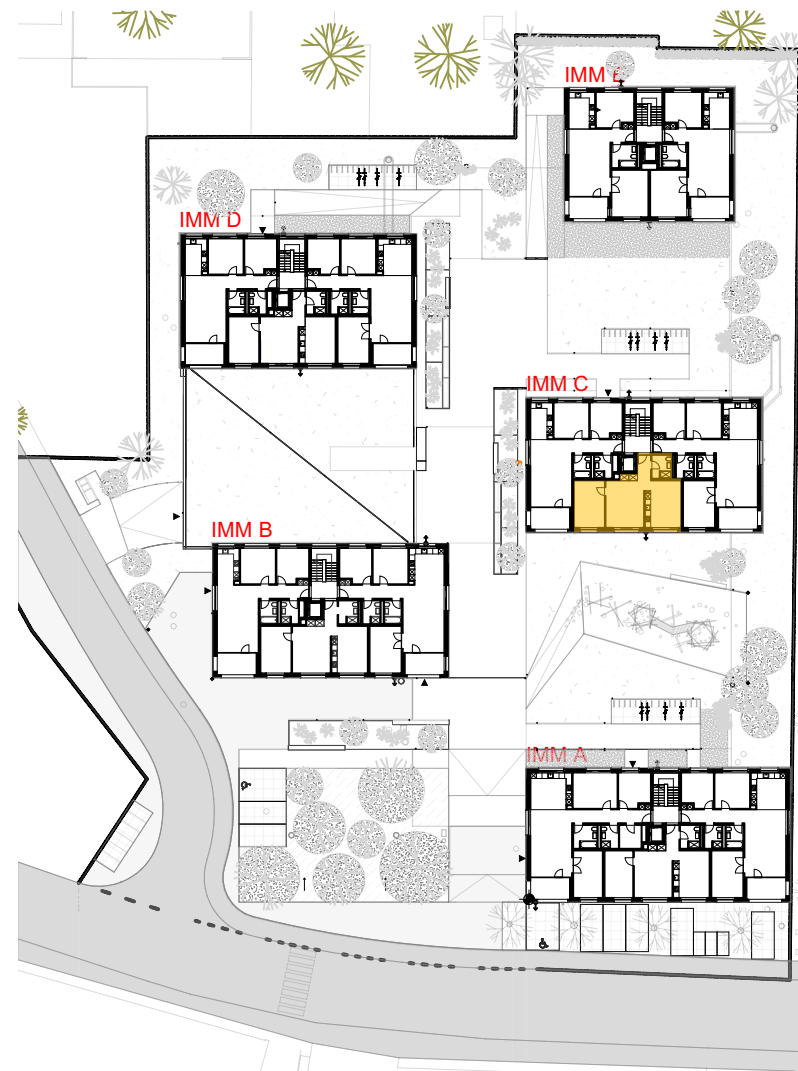
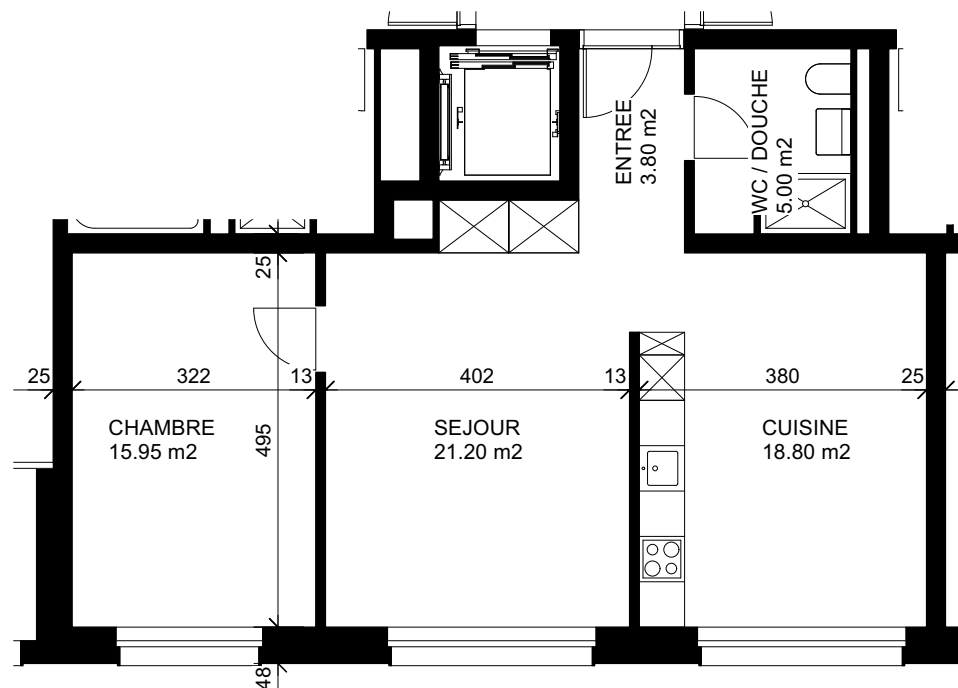
Surface lot 6.11 : 106.20 m²

Loyer net : 1'595

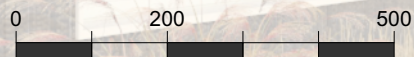
Charges : 375

Total loyer brut : 1'970





éch : 1/100



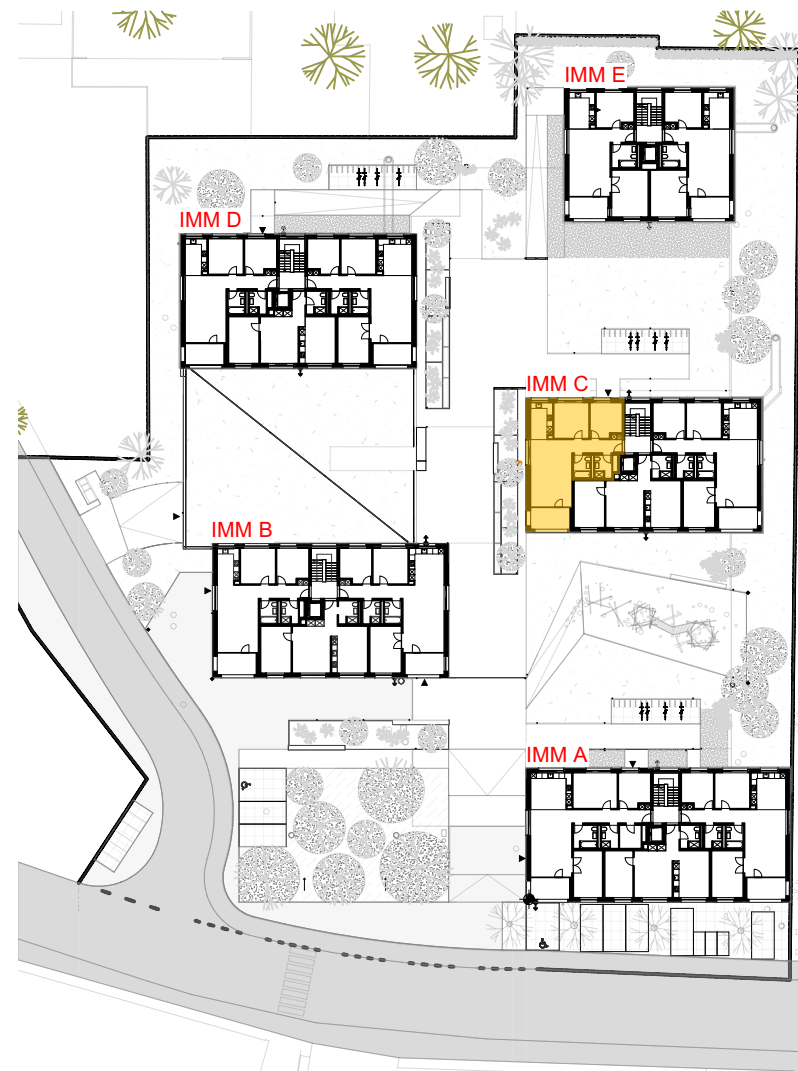
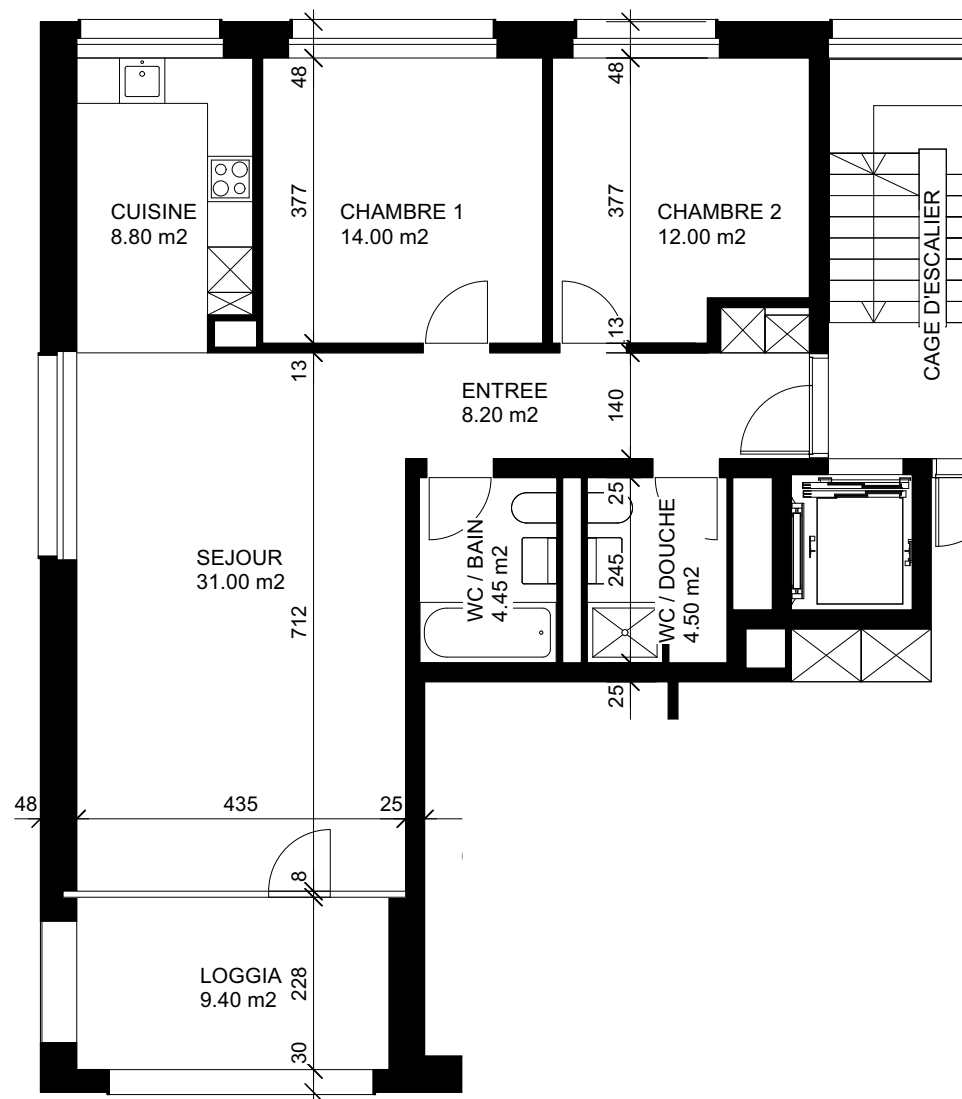
1ER ETAGE

Surface lot 6.12 : 64.75 m<sup>2</sup>

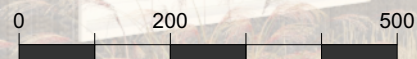
Loyer net : 1'135

Charges : 230

Total loyer brut : 1'365



éch : 1/100



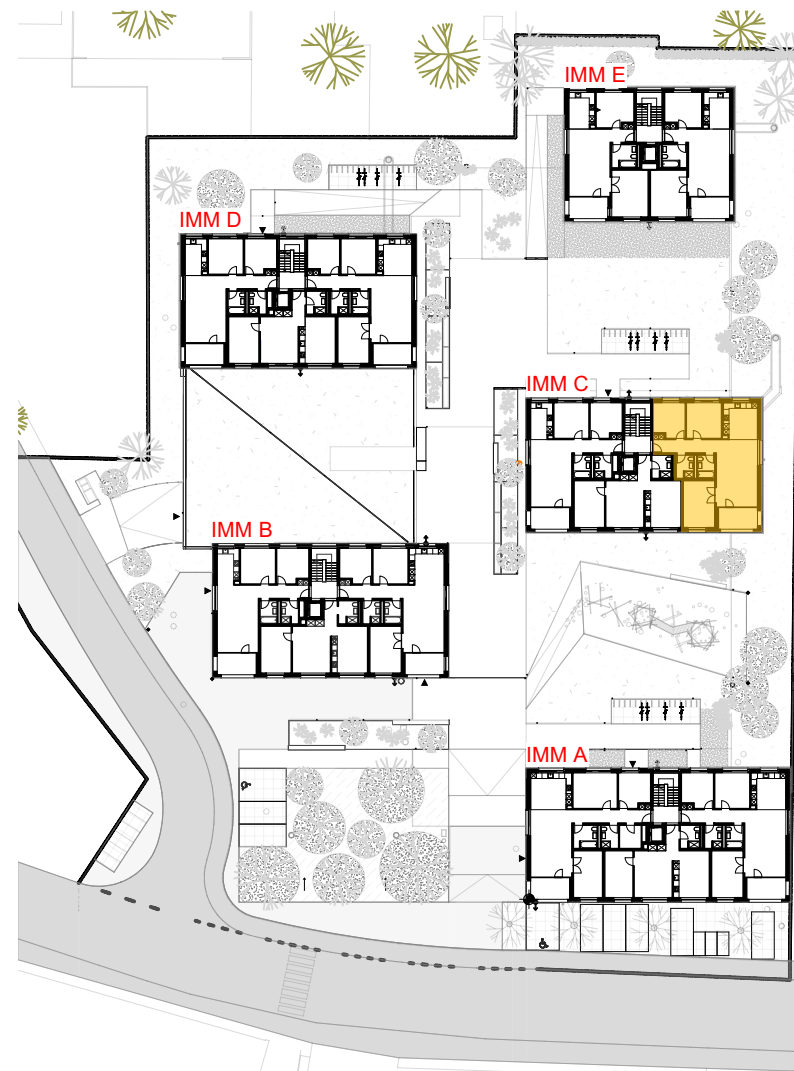
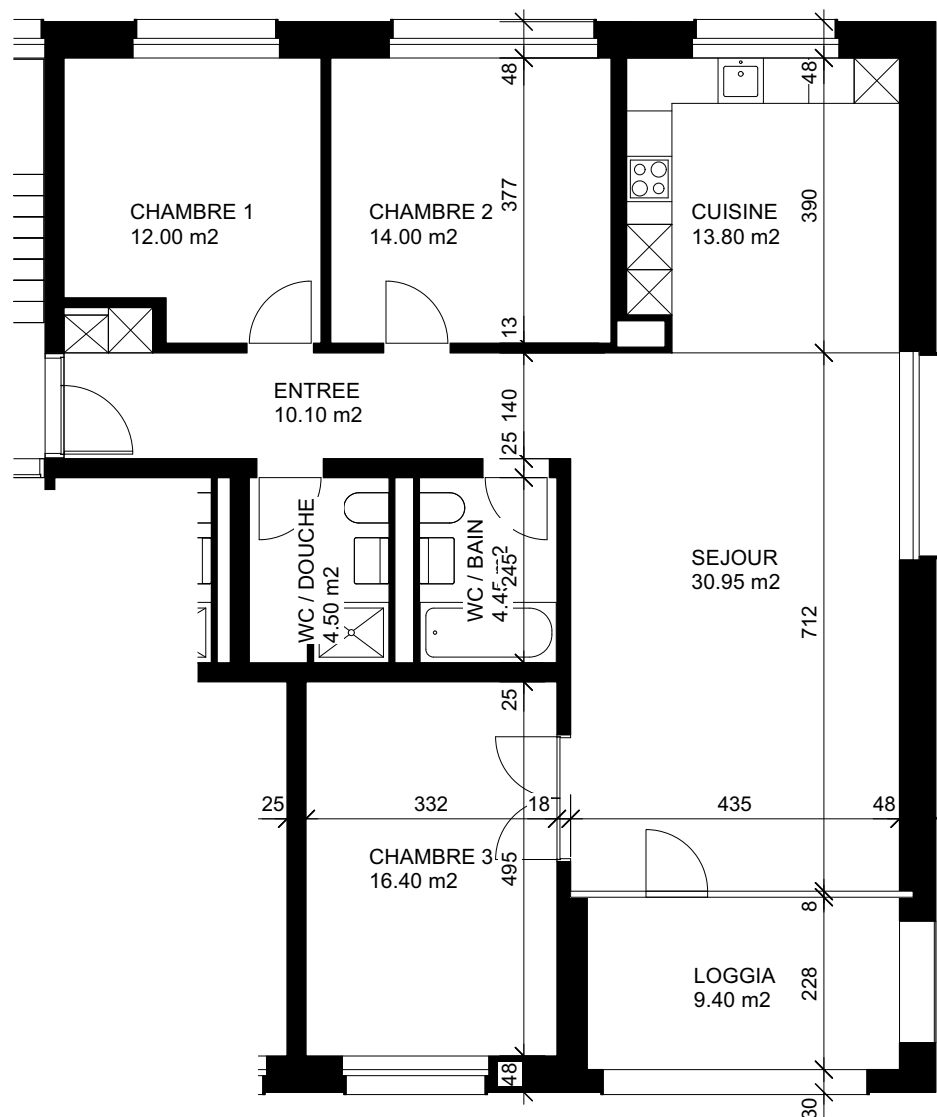
1ER ETAGE

Surface lot 6.13 : 82.95 m<sup>2</sup>

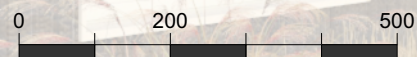
Loyer net : 1'310

Charges : 295

Total loyer brut : 1'605



éch : 1/100



2EME ETAGE

Surface lot 6.21 : 106.20 m<sup>2</sup>

Loyer net :

Charges :

Total loyer brut :

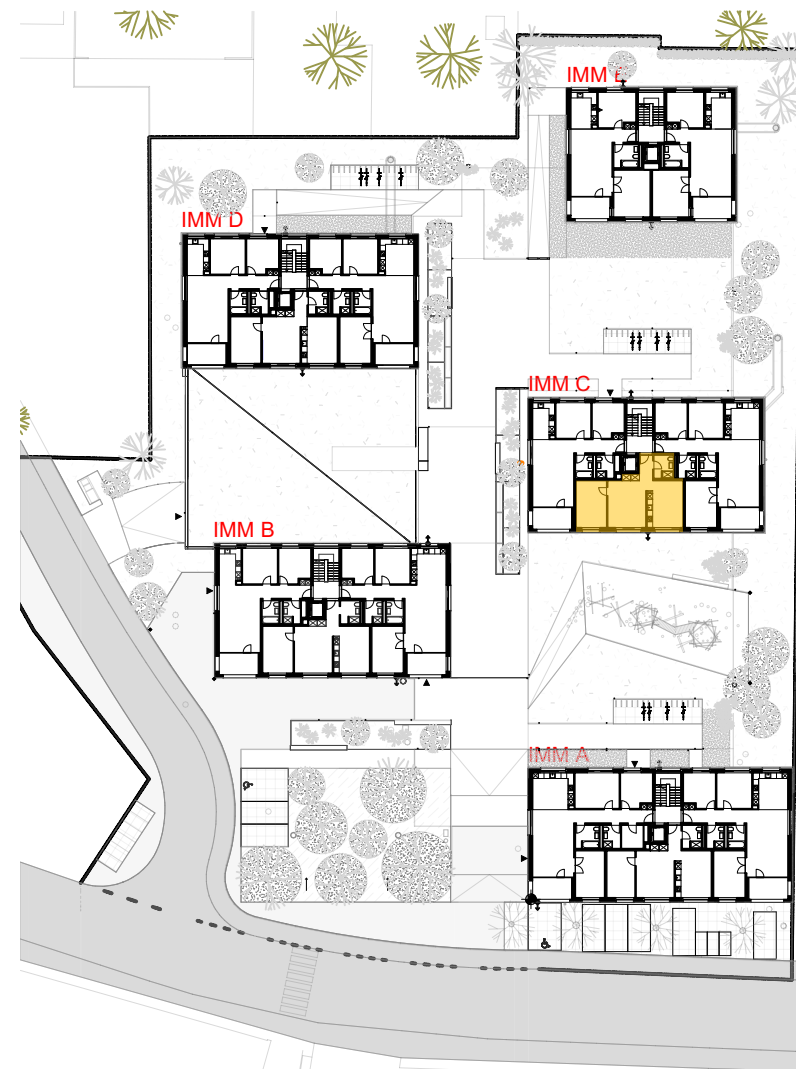
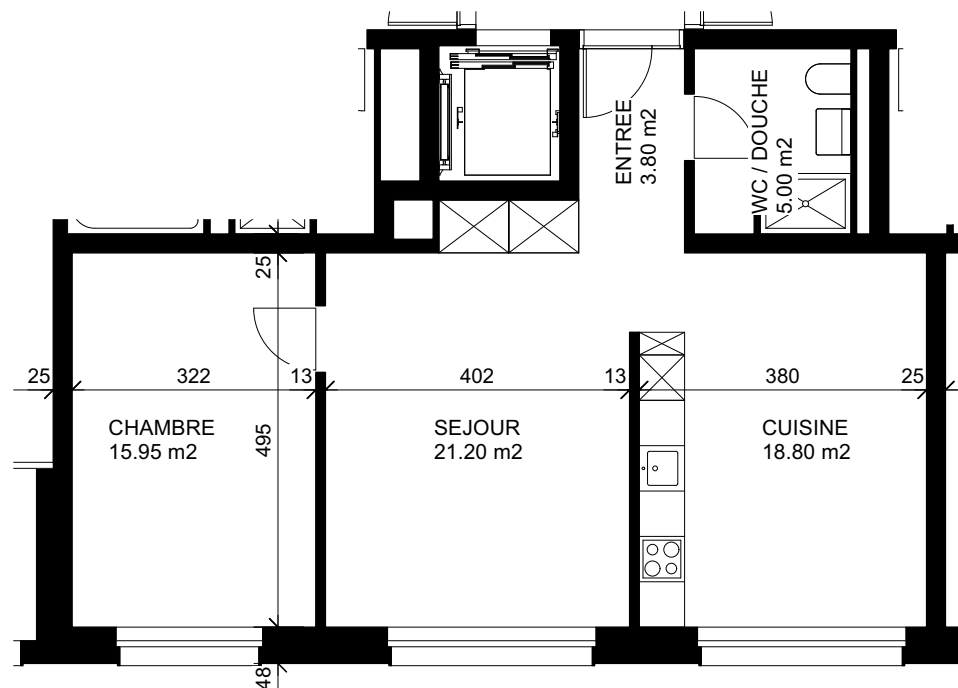
1'595

375

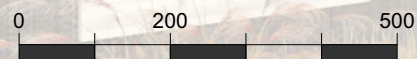
1'970

**cpcn**  
GÉRANCE  
CAISSE DE PENSIONS  
CANTON DE NEUCHÂTEL





éch : 1/100



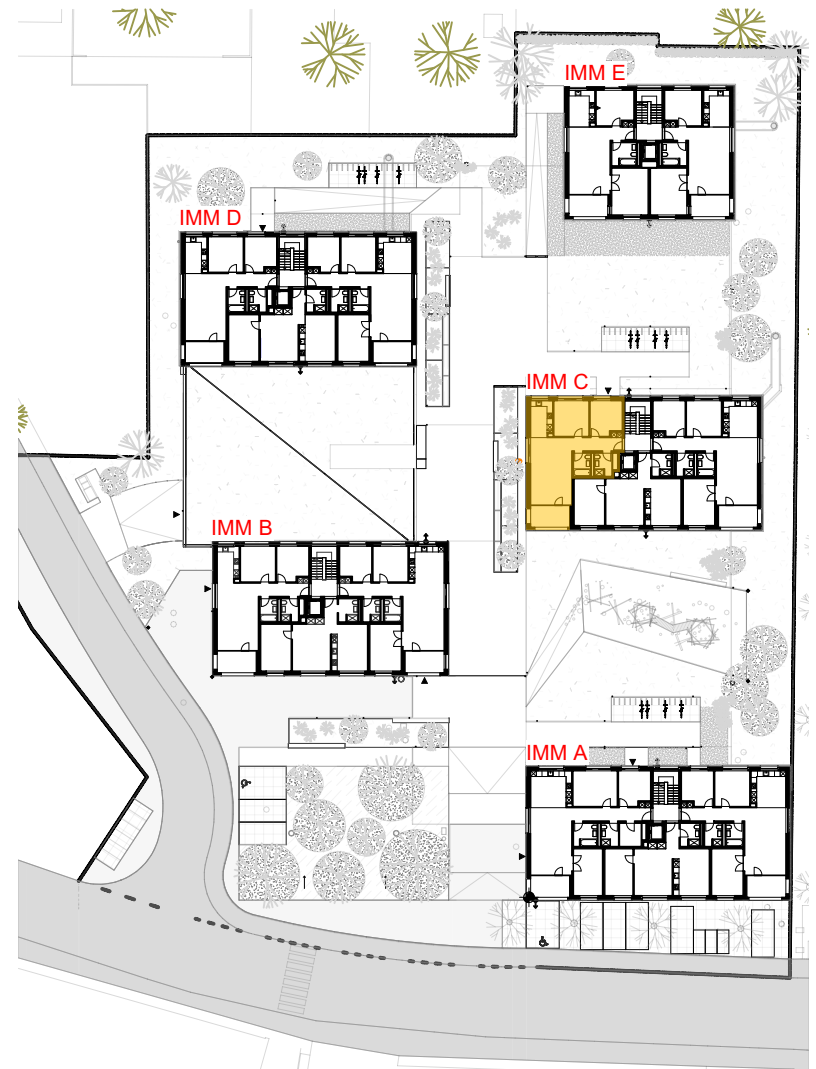
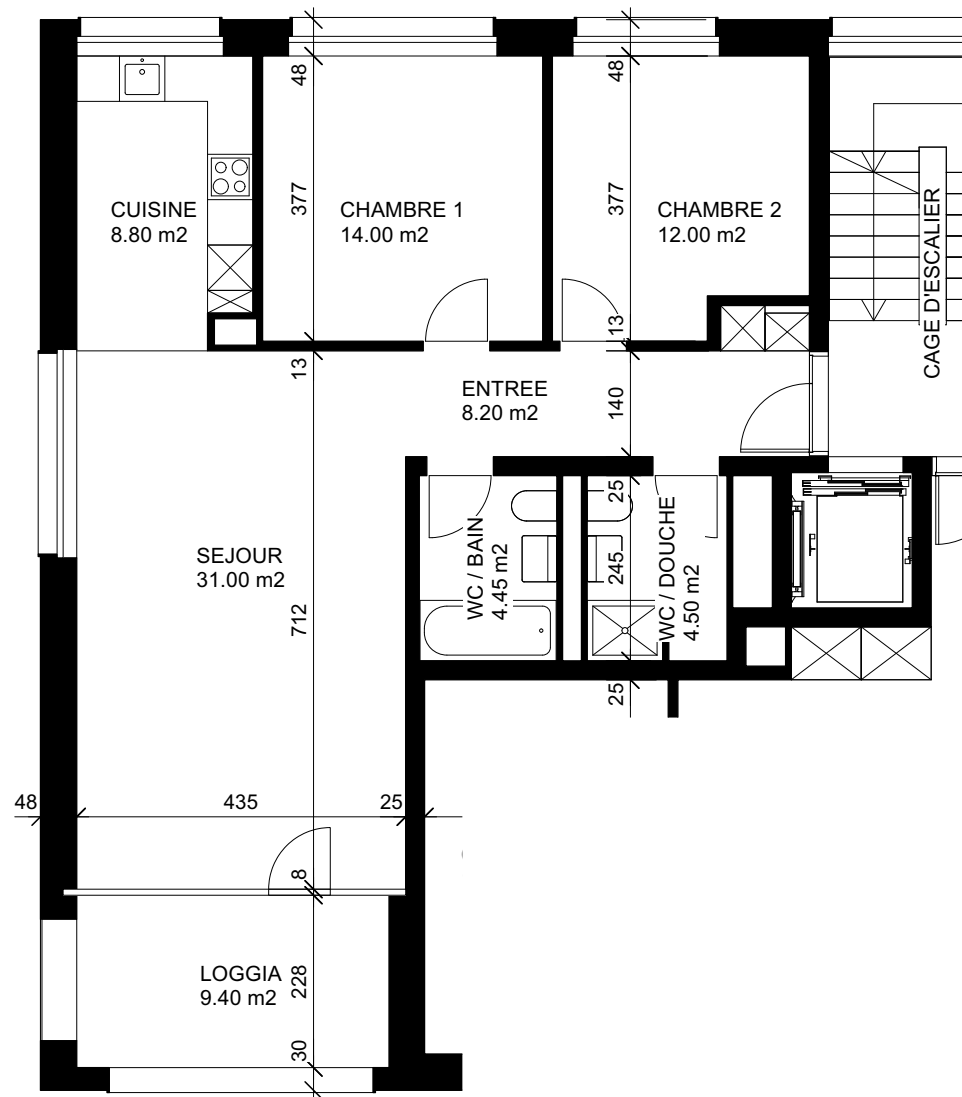
2EME ETAGE

Surface lot 6.22 : 64.75 m<sup>2</sup>

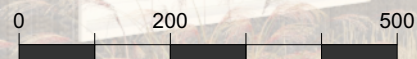
Loyer net : 1'240

Charges : 230

Total loyer brut : 1'470



éch : 1/100



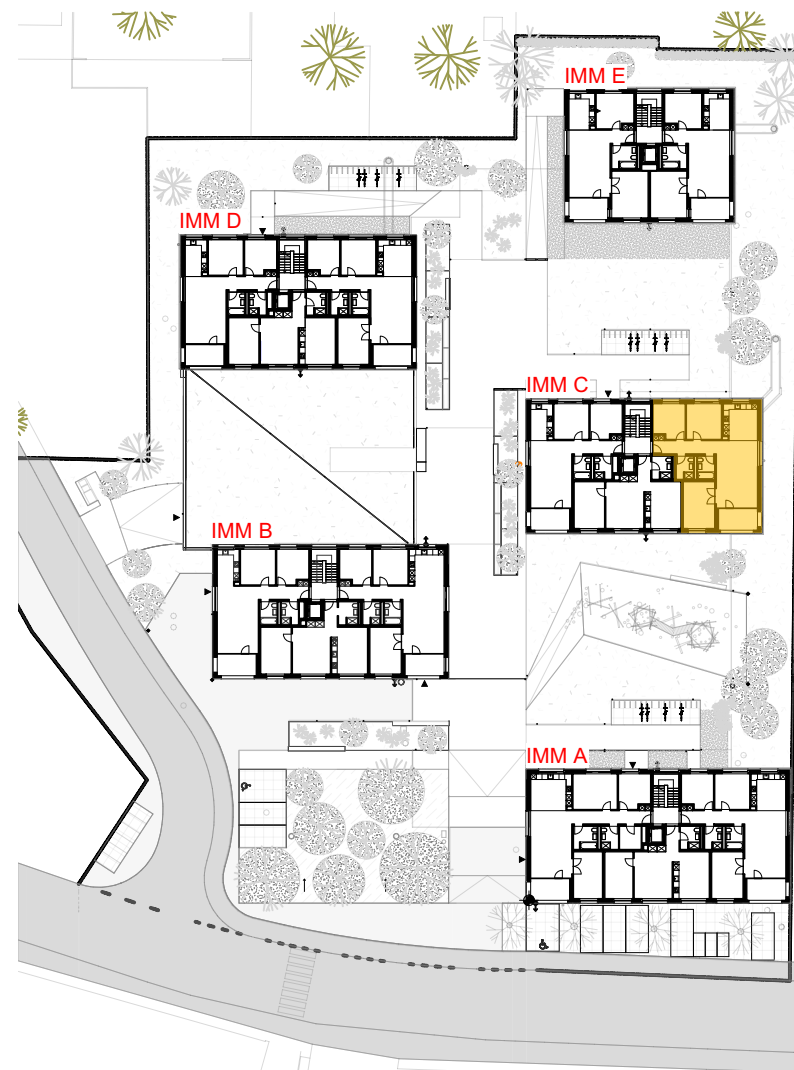
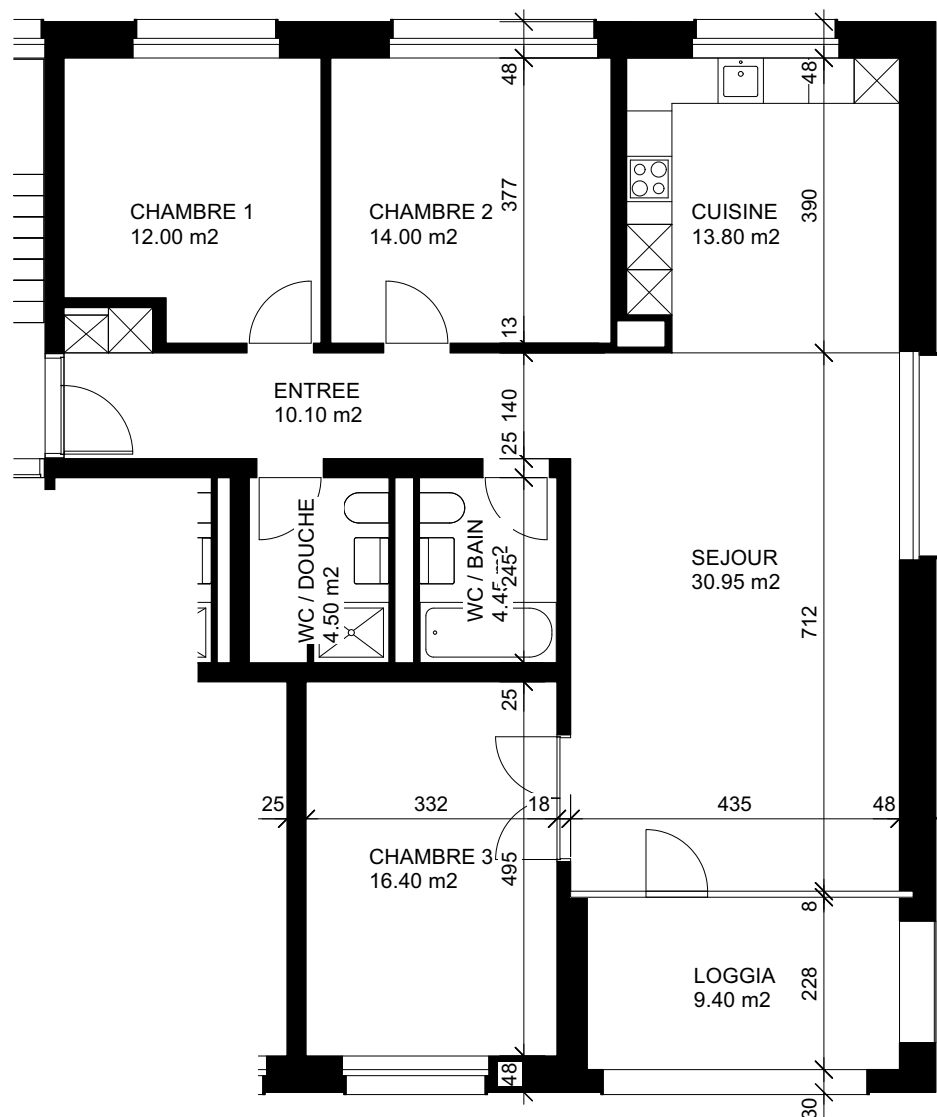
2EME ETAGE

Surface lot 6.23 : 82.95 m<sup>2</sup>

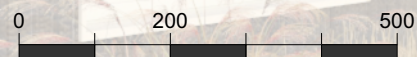
Loyer net : 1'460

Charges : 295

Total loyer brut : 1'755



éch : 1/100



3EME ETAGE

Surface lot 6.31 : 106.20 m<sup>2</sup>

Loyer net :

Charges :

Total loyer brut :

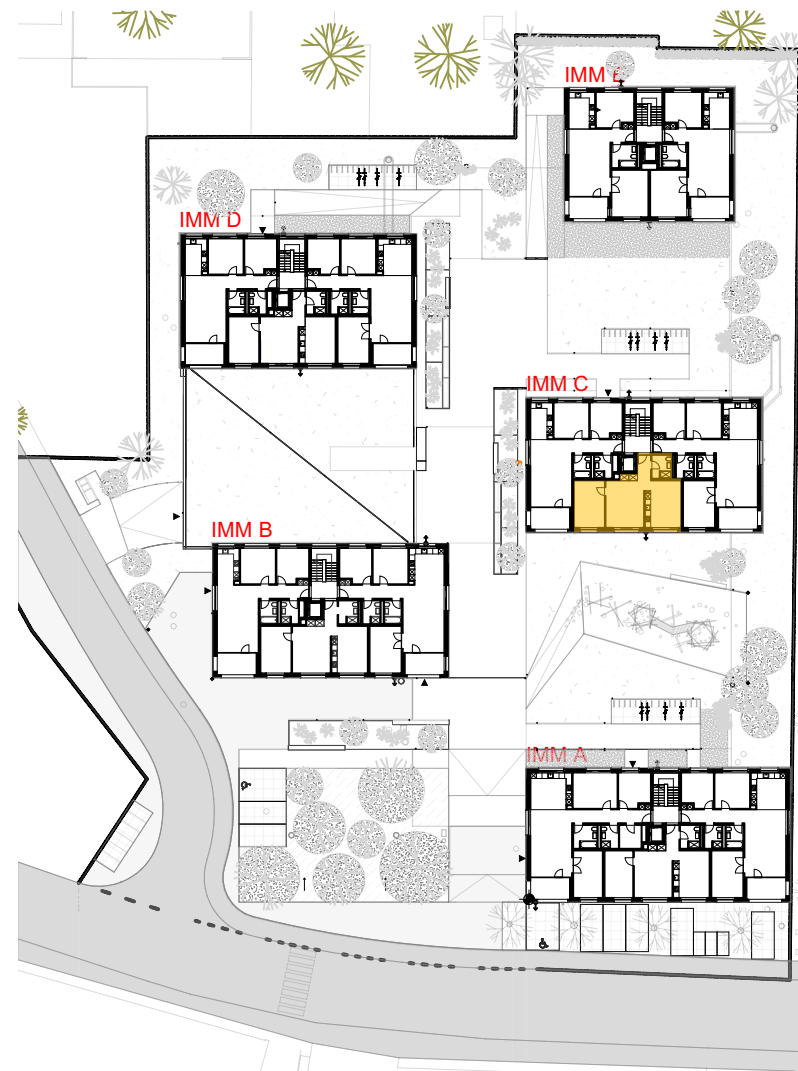
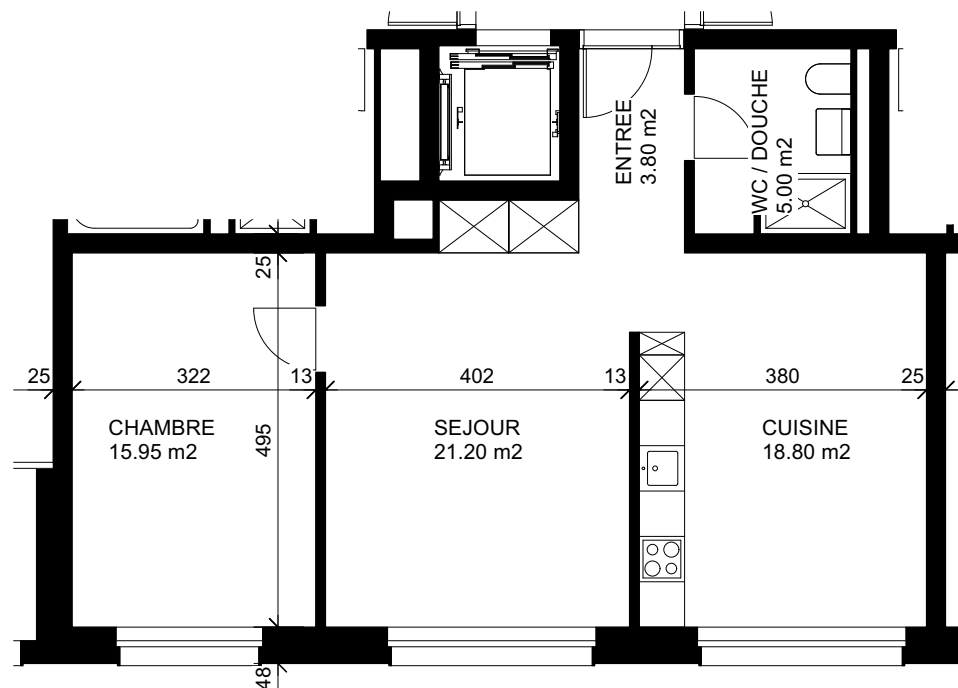
1'775

375

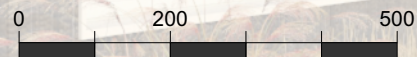
2'150

**cpcn**  
GÉRANCE  
CAISSE DE PENSIONS  
CANTON DE NEUCHÂTEL





éch : 1/100



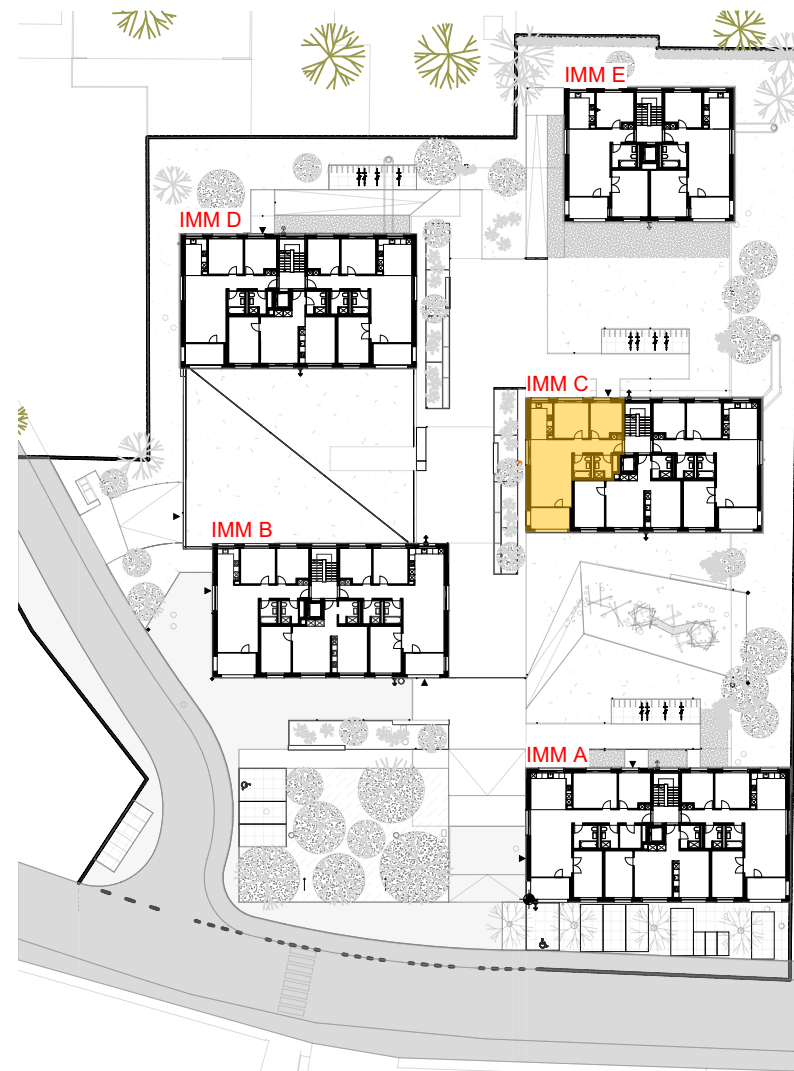
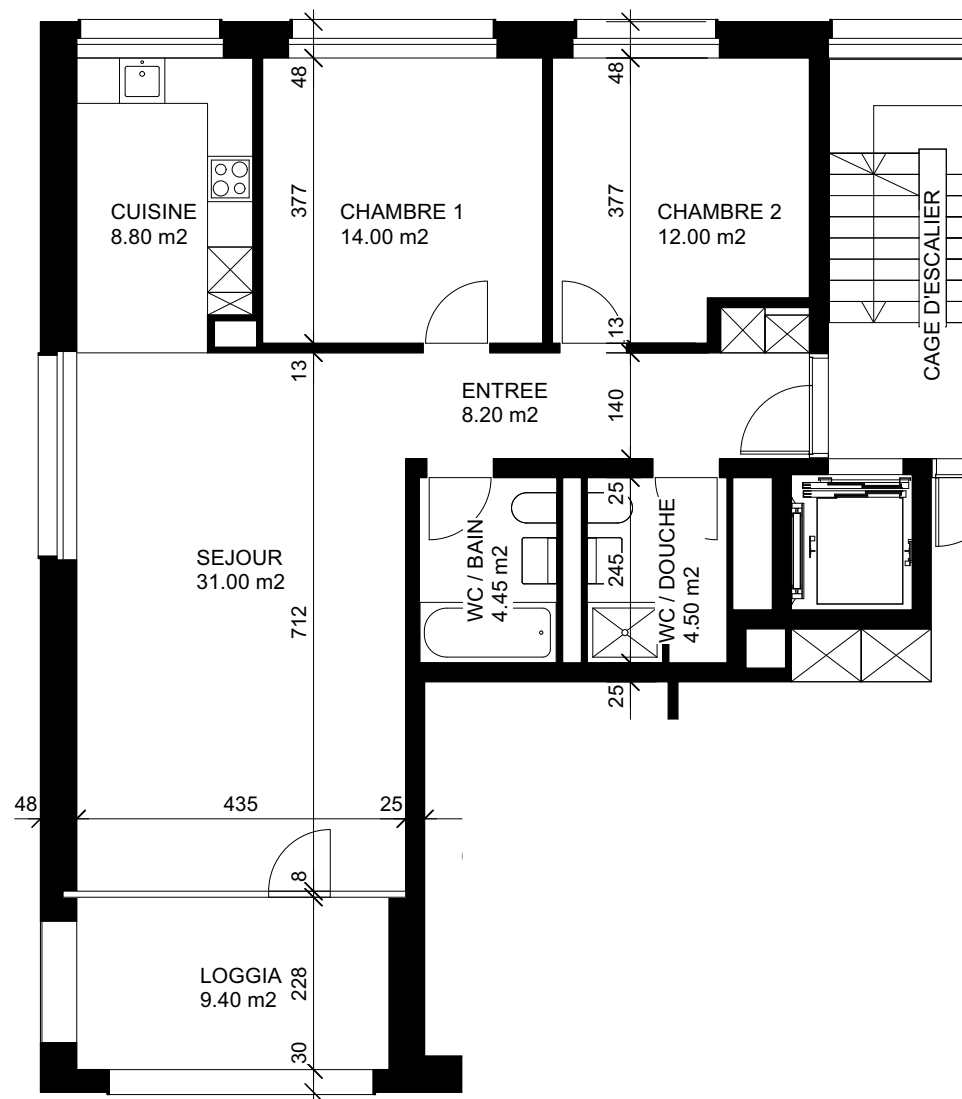
3EME ETAGE

Surface lot 6.32 : 64.75 m<sup>2</sup>

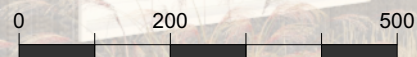
Loyer net : 1'310

Charges : 230

Total loyer brut : 1'540



éch : 1/100



3EME ETAGE

Surface lot 6.33 : 82.95 m<sup>2</sup>

Loyer net : 1'485

Charges : 295

Total loyer brut : 1'780